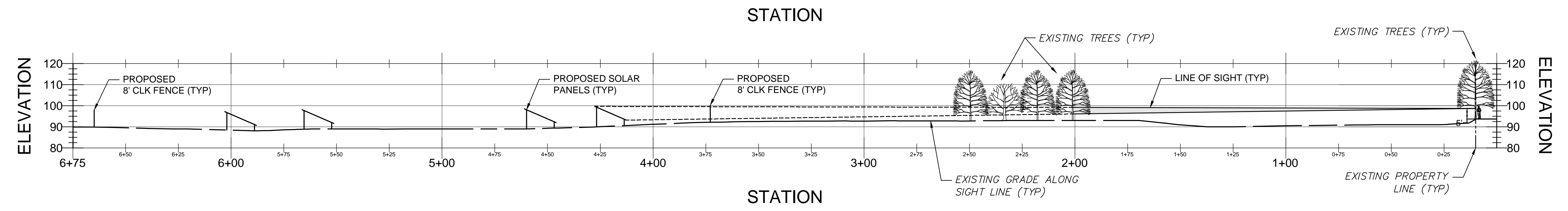
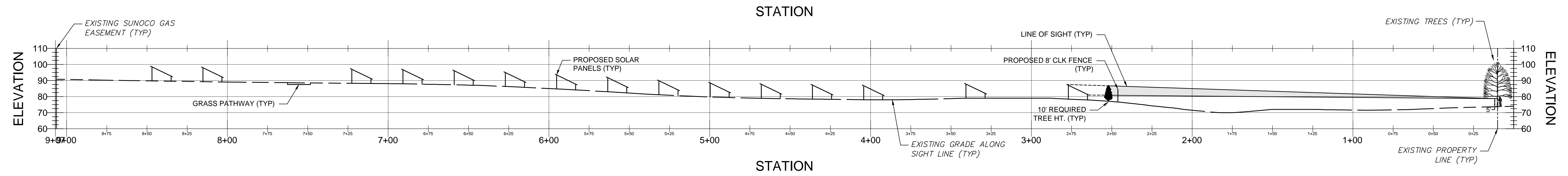


UNIVERSITY OF DOCUMENTS: THIS DOCUMENT AND THE IDEAS AND DESIGNS INCORPORATED HEREIN AS AN INSTRUMENT OF PROFESSIONAL SERVICE ARE THE PROPERTY OF H&B DESIGN GROUP, LLC AND ARE NOT TO BE USED, IN WHOLE OR IN PART, FOR OTHER PROJECTS WITHOUT THE WRITTEN AUTHORIZATION OF H&B DESIGN GROUP, LLC. IT IS UNLAWFUL FOR ANY PERSON TO AID IN ANY ASPECT OF THESE DRAWINGS UNLESS THEY HAVE THE APPROVAL OF THE LICENSED PROFESSIONAL IN WRITING.

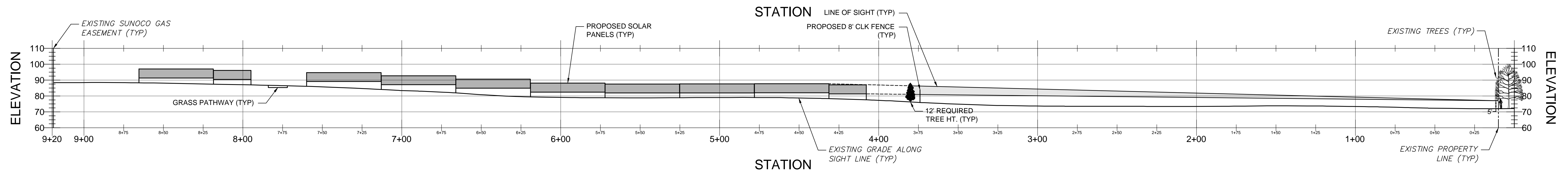
PROFILE OF VIEW 5 (OLD TRENTON - NORTHEAST)



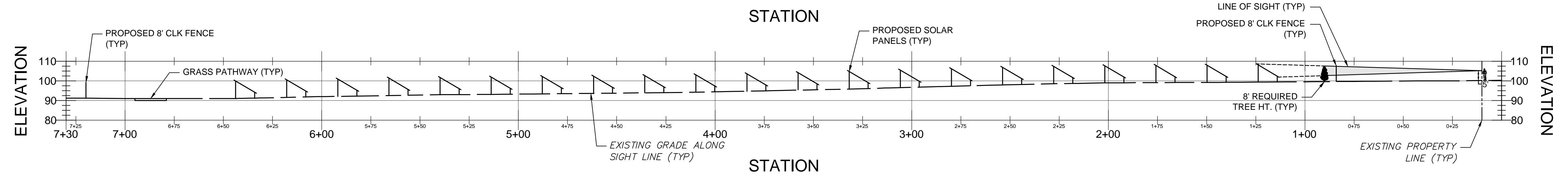
PROFILE OF VIEW 4 (SOUTH POST - SOUTHWEST)



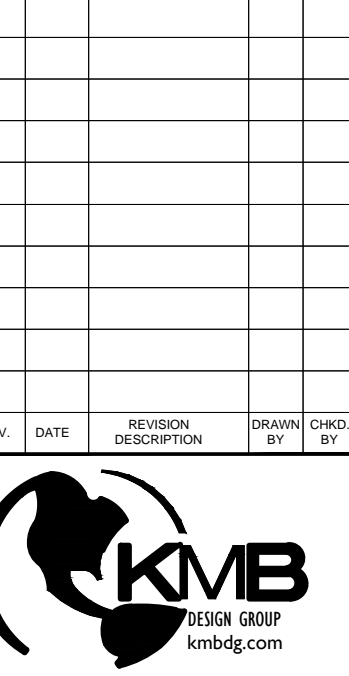
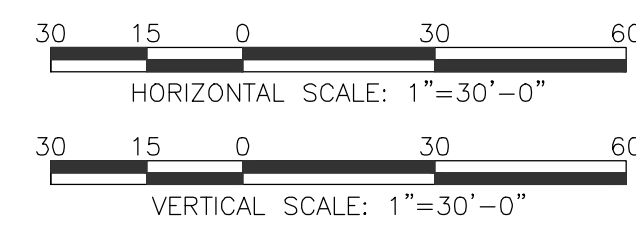
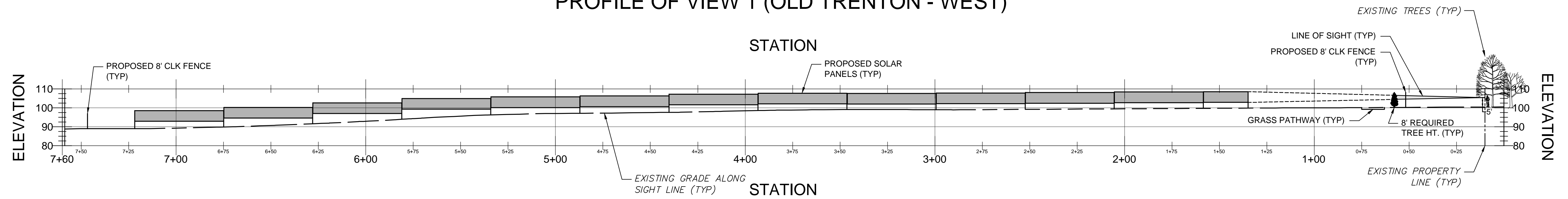
PROFILE OF VIEW 3 (SOUTH POST - WEST)



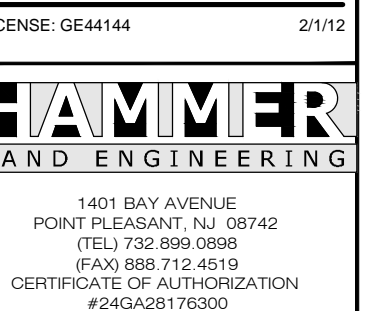
PROFILE OF VIEW 2 (OLD TRENTON - NORTH)



PROFILE OF VIEW 1 (OLD TRENTON - WEST)



Stephen A. Bray
PROFESSIONAL ENGINEER



JOSEPH D. HANRAHAN
PROFESSIONAL ENGINEER
PA LICENSE NUMBER 42030
PA LICENSE NUMBER 70067



THE MERCER COUNTY RENEWABLE ENERGY PROJECT
 MERCER COUNTY COMMUNITY COLLEGE
 1200 OLD TRENTON ROAD
 WEST WINDSOR, NJ 08550

732.0108

SIGHT LINE
PROFILE VIEWS
SOUTH POST RD.
OLD TRENTON RD.

SCALE: AS NOTED

DATE: 05.22.12

SLV-03