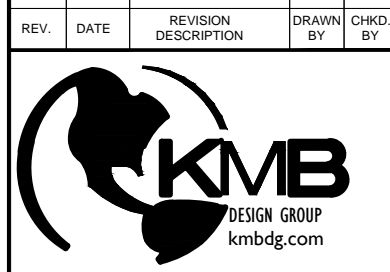


OWNERSHIP OF DOCUMENTS: THIS DOCUMENT AND THE IDEAS AND DESIGNS INCORPORATED HEREIN ARE THE PROPERTY OF H&B DESIGN GROUP, LLC AND ARE NOT TO BE USED, IN WHOLE OR IN PART, FOR OTHER PROJECTS WITHOUT THE WRITTEN AUTHORIZATION OF H&B DESIGN GROUP, LLC. IT IS UNLAWFUL FOR ANY PERSON TO AEMEND ANY ASPECT OF THESE DRAWINGS UNLESS THEY HAVE THE APPROVAL OF THE LICENSED PROFESSIONAL IN WRITING.



IMPROVED IN SUITE BY
WALL, NESTLE
7700 BRIDGE
FOR ALL QUESTION, PLEASE CONTACT
YOUR TRAVEL OR PROJECT MANAGER

Stephen A. Bray
PROFESSIONAL ENGINEER

LICENSE: GE-4114 2/1/12



1401 BAY AVENUE
POINT PLAINSHAM, NJ 08742
TEL: 732-898-0888
FAX: 856-712-4519
CERTIFICATE OF AUTHORIZATION
#AGAG00176000

JOSEPH D. HANRAHAN
PROFESSIONAL ENGINEER
PA LICENSE NUMBER 42039
PA LICENSE NUMBER 76067



THE MERCER COUNTY RENEWABLE ENERGY PROJECT
MERCER COUNTY COMMUNITY COLLEGE
1200 OLD TRENTON ROAD
WEST WINDSOR, NJ 08550

732.0108

SIGHT LINE
PLAN VIEWS
OLD TRENTON RD.

SCALE: AS NOTED

DESIGNED BY	CREATED BY	DATE
JCH	CLM	05.22.12

SLV-01